

# 电脑多头旋梭绗缝机 (N型)

# Computerized Multi-head Rotary-hook Quilting Machine (Model N)

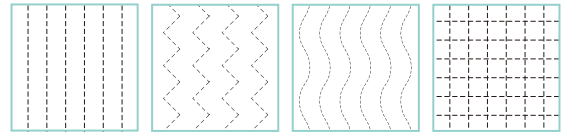
**1500RPM**



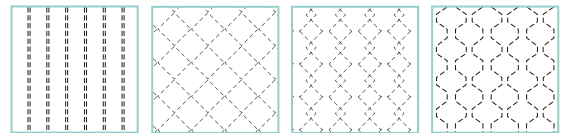
## 适用范围 Application

适用于冬被, 夏凉被, 被盖, 床垫保护垫, 床垫等的多头绗缝。  
Suitable for multi-head quilting of winter comforter, summer quilts, bed covers, mattress protector, mattress, etc.

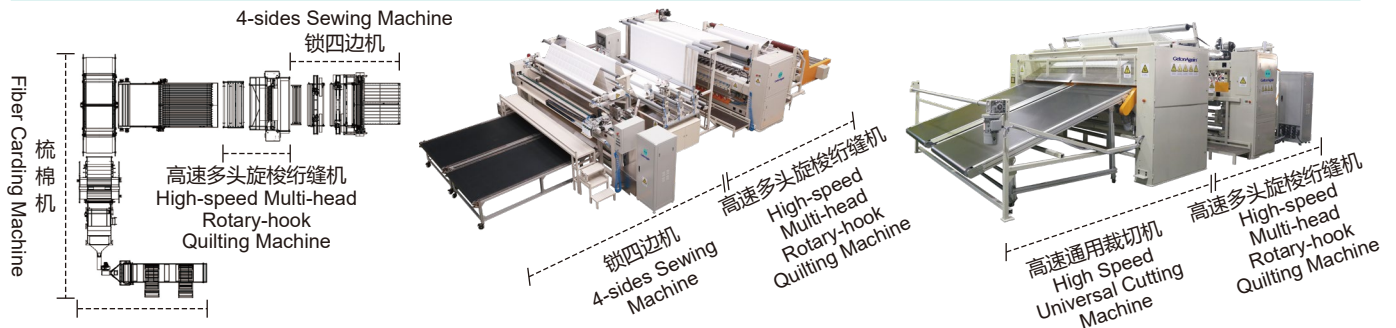
### 单排针花型/Single needle row pattern



### 双排针花型/Double needle row pattern



## 全自动被子生产线应用 Automatic Bedding Production Line Application



## 机器参数 Parameters

绗缝克重: Quilting Density:	≤1000GSM	工作速度: Working Speed:	1500RPM	旋梭: 3倍大旋梭 Rotary Hook: 3 times large rotary hook	
步长: Stitch Length:	2mm-6mm	绗缝厚度: Sewing Thickness:	≤50mm	电源: Voltage:	380V 50Hz

## 推荐型号 Model

推荐型号 Model	头距 Head Distance	针排 Needle Row	适用布幅宽度 Fabric Width	机器占地尺寸 (L×W×H) Installation Size
GOA-CMRQM-NM-1500S(N)-24-420×2415-105-S50-VR3-NA-3P380	105	单排 Single Row	2500mm	5930×3600×2450mm
★ GOA-CMRQM-NM-1500S(N)-27-420×2730-105-S50-VR3-NA-3P380	105		2800mm	5930×3600×2450mm
GOA-CMRQM-NM-1500S(N)-32-420×3255-105-S50-VR3-NA-3P380	105		3300mm	5930×3600×2450mm
GOA-CMRQM-NM-1500S(N)-17-420×2438-152.4-S50-VR3-NA-3P380	152.4		2500mm	5930×3600×2450mm
GOA-CMRQM-NM-1500S(N)-19-420×2743-152.4-S50-VR3-NA-3P380	152.4		2800mm	5930×3600×2450mm
★ GOA-CMRQM-NM-1500D(N)-26+25-315×2625-105-S50-VR3-NA-3P380	105	双排 Double Row	2700mm	5075×4200×2350mm
GOA-CMRQM-NM-1500D(N)-29+28-315×2940-105-S50-VR3-NA-3P380	105		3000mm	5390×4200×2350mm
★ GOA-CMRQM-NM-1500D(N)-32+31-315×3255-105-S50-VR3-NA-3P380	105		3300mm	5705×4200×2350mm
GOA-CMRQM-NM-1500D(N)-17+16-304.8×2438-152.4-S50-VR3-NA-3P380	152.4		2500mm	5075×4200×2350mm
GOA-CMRQM-NM-1500D(N)-19+18-304.8×2743-152.4-S50-VR3-NA-3P380	152.4		2800mm	5380×4200×2350mm

★ 畅销明星机型/Most popular model

# 电脑多头旋梭绗缝机 (N型) Computerized Multi-head Rotary-hook Quilting Machine (Model N)

## 机器特点

- 大旋梭多头绗缝机，工作速度高达1500转/分，是普通飞梭绗缝机速度的2-3倍，大大提高了工作效率。
- 专用3倍大旋梭，底线容量更大，减少更换频率；线迹美观，无丢针、不起环。
- 触摸屏操作，图形化界面，清晰直观，所有功能可视于同一界面。
- 全伺服电机驱动，控制精准，动力强劲。
- 针排距可从76mm-228mm任意调节，实现特大花样绗缝，下排针X向最多可移动针距的一半，配合上针可完成各种花型的绗缝排针，无需改变针位，从而大大提高生产效率。
- 立交换梭，轻松快捷，改善工人劳动强度。
- 机头和旋梭零件特殊表面处理、微油润滑、经久耐用。

## Features

- Double-row lock-stitch multi-head quilter, with large rotary hook, max. speed of 1500 rpm, more than 2-3 of normal shuttle quilting machine, greatly improves work efficiency.
- 3-Fold capacity rotary hook, less bobbin changing frequency; beautiful stitches, no lost stitch, no thread loops.
- Touch screen operation, graphical interface, clear and intuitive, all functions can be seen on the same interface.
- Full servo motor driving system, precise control and strong power.
- The needle row distance can be adjusted arbitrarily from 76 to 228mm to achieve extra-large pattern quilting. The lower needle row can move half the needle distance in the X direction to match the upper needle.
- Various patterns needle calculation can be done without changing the needle position, thereby greatly improved production efficiency.
- Bobbin change in standing position, easy and fast, reduce labor intensity.
- Special surface-treated sewing heads and rotary hook parts, micro-oil lubricating system, more durable.

## 主要配置 Machine Configuration



全新Ⅲ型电脑控制系统，友好的人机界面，触控灵活，存储量大。  
Brand-new computer control system, friendly HMI, flexible touch control, large storage capacity.



双排机型：双针排间距 3-9 英寸任意调节，下排机头可在半个头距内整体横移，花型设计更为多样。  
Double-row quilter: the distance of two needle rows are adjustable within 3-9 inches, quilting heads in lower row could move horizontally as a whole, up to half a head distance, making the pattern design more diversified.



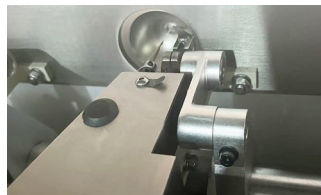
原装进口 3 倍大旋梭，超大底线容量，特殊表面处理，微油润滑。  
Original imported 3 times large rotary hook, big bobbin thread capacity, special surface treatment, micro-oil lubrication.



雾化喷油系统：自动、精准、无污，可直接润滑至上机头壳体内零件及下机头旋梭导轨，根据设定参数自动喷油雾。  
Atomized oil lubrication system: automatic, precise, pollution-free, can directly lubricate the parts inside of upper heads cover or rotary hook guide rail of lower heads, automatically spraying oil mist by set parameters.



一体随动式上料架，减少面料整理工序，降低人工强度。  
The integrated follow-up fabric feeding rack reduces fabric tidying process and labor intensity.



可调压脚机构，适合不同厚度的材料绗缝。  
Adjustable presser foot mechanism, suitable for quilting different thickness of materials.



出料、拉料装置 (选配)  
Fabric Discharging & Pulling Devices (Optional)



主动送棉装置 (选配)  
Automatic Wadding Feeding Devices (Optional)

### 天津市再登科技有限公司

地址：天津宝坻经济开发区天宝南环路3号

东莞分公司：东莞市厚街镇莞太路桥头路段西412号

山西分公司：山西转型综合改革示范区学府产业园长治路227号高新国际A座1101室

再登科技（香港）有限公司：香港九龍新蒲崗大有街1號勤達中心20樓1-5室

中国台湾办事处：臺灣新北市三重區重新路5段609巷20號5樓之4

**400-166-8581**

### Tianjin GetonAgain Technology Co., Limited

Address: No.3, Tianbao Nan Huan Road, Baodi Economic Development Zone, Baodi, Tianjin, China. Tel: +86 22-2252 6200

Email: sales@getonagain.com www.GetonAgain.com

Branch Office: India | Bangladesh | Pakistan | Vietnam | Germany |

France | Mexico |